

DAILY REPORT



For more information, email trading_sales@tsx.com

March 14, 2025

Indices	March 14 Close	Previous Close	Change	% Change
S&P/TSX Composite Index	24,553.40	24,203.23		1.45 %
S&P/TSX 60 Index	1,475.30	1,453.74		1.48 %
S&P/TSX Venture Composite	621.13	613.17		1.30 %
S&P/TSX Completion Index	1,463.91	1,445.24		1.29 %
S&P/TSX Smallcap Index	801.53	790.82		1.35 %

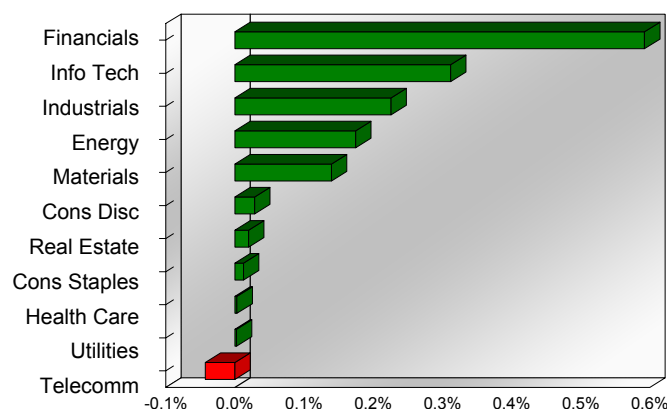
S&P/TSX Composite Index		
Advancers	Decliners	Unchanged
173	44	3

S&P/TSX Composite Index			
Top 10 Index Contributors		Top 10 Index Detractors	
Constituent	Index Contribution	Constituent	Index Contribution
SHOP	49.04	BCE	-8.82
RY	29.39	TOU	-2.47
BN	22.81	ATD	-2.03
CP	19.97	T	-1.43
TD	16.70	EMA	-0.74
MFC	16.63	ABX	-0.72
CNQ	12.20	FTS	-0.72
BMO	11.01	NPI	-0.68
CSU	9.71	CAR.UN	-0.67
SU	8.23	ALA	-0.55

S&P/TSX Composite Index			
Top 10 Advancers		Top 10 Decliners	
Constituent	Return	Constituent	Return
NFI	20.79%	BCE	-4.15%
MATR	15.16%	NG	-3.60%
GSY	5.60%	CXB	-2.26%
BB	5.52%	NPI	-2.02%
CLS	5.48%	SEA	-1.84%
BDT	5.29%	EFR	-1.83%
IPCO	4.95%	TOU	-1.59%
HWX	4.69%	NGD	-1.50%
OLA	4.69%	CAR.UN	-1.41%
LSPD	4.67%	EQX	-1.12%

S&P/TSX Composite Index				
Sector	# of Index Constituents	Weight	Market Cap (\$B)	Index Contribution
Financials	25	31.90 %	\$1,117.08	143.39
Information Technology	10	9.63 %	\$337.16	75.49
Industrials	28	12.53 %	\$438.68	54.60
Energy	43	16.86 %	\$590.31	42.22
Materials	49	13.53 %	\$473.77	33.81
Consumer Discretionary	11	3.29 %	\$115.23	6.86
Real Estate	20	1.92 %	\$67.09	4.78
Consumer Staples	10	3.74 %	\$130.88	3.00
Health Care	4	0.28 %	\$9.69	0.71
Utilities	15	3.89 %	\$136.21	0.58
Communication Services	5	2.45 %	\$85.94	-10.36
S&P/TSX Composite Index	220	100.00 %	\$3,502.03	355.11

S&P/TSX Composite Index - Sectors Returns



This report is published by TSX Inc. TSX Inc. does not guarantee either the completeness or the accuracy of this information. The information contained in this report is provided for informational purposes only and you agree not to rely upon the information contained in this report for any trading, business or financial purpose. These sheets are printed in Canada and issued by TSX Inc. under the express condition, to which everyone receiving or making use thereof assents, that no liability shall be incurred by TSX Inc. or its affiliated companies or any other vendor or donor, including, without limitation, for reliance on or for any errors or inaccuracies in this report. Neither TMX Group Limited, TSX Inc., nor any of their affiliated companies, guarantees the completeness of the information contained in this document and are not responsible for any errors or omission in or your use of, or reliance on, the information. This publication is under copyright. © 2016 TSX Inc. All rights reserved. Do not copy, distribute, sell or modify this publication without the prior written consent of TSX Inc.

<http://www.tsx.com/trading>

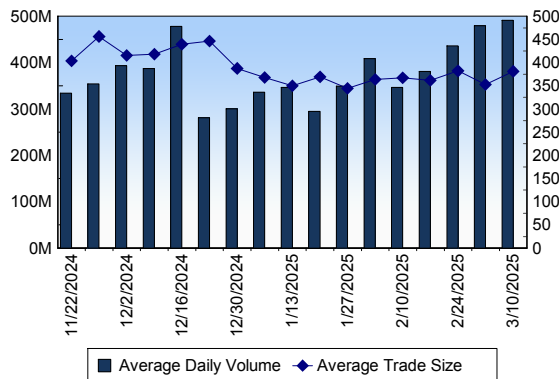
TSX

Daily Volume	380,532,337
Daily Value	\$12,607,458,071
Daily Trades	1,026,644
Daily Symbols Traded	2,099

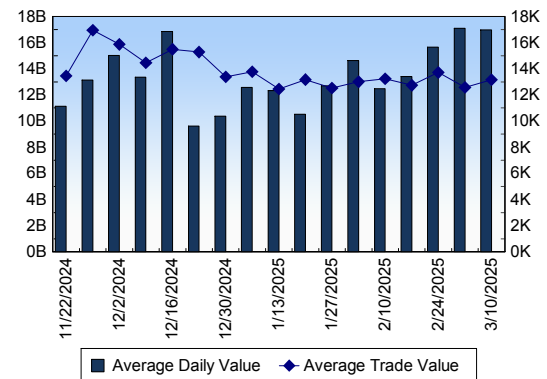
TSX ANONYMOUS TRADING

Daily Volume	185,206,096
Daily Value	\$6,354,391,702
Average Trade Size	343
% TSX Volume	48.67 %

TSX Volume



TSX Value (in Canadian Dollars)



Top 20 TSX Symbols by Volume

Symbol	TSX Volume	TSX Value
CNQ	15,763,145	\$663,267,519
SU	9,345,535	\$491,570,465
MFC	7,865,961	\$332,096,371
PPL	7,781,325	\$435,821,037
CVE	7,731,101	\$149,250,106
VRN	6,333,556	\$55,342,781
BTO	6,226,279	\$26,576,051
FM	6,057,677	\$125,969,463
ENB	5,876,614	\$361,627,315
TD	5,371,487	\$453,985,855
BCE	4,832,142	\$162,896,316
WCP	4,673,911	\$40,041,907
HND	4,511,421	\$23,293,950
AC	4,441,623	\$67,916,196
TRP	4,267,861	\$289,052,083
ABX	4,267,762	\$115,590,599
CS	4,033,462	\$32,018,176
CM	3,888,546	\$313,617,856
GWO	3,818,142	\$197,569,104
BTE	3,814,315	\$11,616,123

Top 20 TSX Symbols by Value

Symbol	TSX Volume	TSX Value
CNQ	15,763,145	\$663,267,519
SU	9,345,535	\$491,570,465
TD	5,371,487	\$453,985,855
PPL	7,781,325	\$435,821,037
RY	2,657,048	\$423,702,640
ENB	5,876,614	\$361,627,315
MFC	7,865,961	\$332,096,371
CM	3,888,546	\$313,617,856
TRP	4,267,861	\$289,052,083
SHOP	1,808,630	\$246,089,937
BMO	1,649,523	\$229,417,952
NA	1,795,225	\$209,882,527
QSR	2,191,387	\$207,854,932
BNS	3,014,649	\$207,513,437
SLF	2,530,700	\$201,107,470
GWO	3,818,142	\$197,569,104
CSU	39,962	\$187,648,770
TOU	2,799,696	\$181,728,705
CNR	1,285,667	\$179,992,770
BCE	4,832,142	\$162,896,316

ETF Trading

Daily Volume	43,767,292	Average Trade Value	\$13,751
Daily Value	\$1,125,703,671	Average Trade Size	535
# Trades	81,862	# of ETFs Traded	1,057

Top 10 ETFs by TSX Volume

Symbol	Market Volume	Market Value
HND	4,511,421	\$23,293,950
XIU	3,419,643	\$126,840,905
ZEB	1,626,327	\$64,860,057
XEG	1,430,351	\$23,800,090
QQU	1,414,723	\$28,473,497
QQD	1,402,360	\$16,689,420
BTCC.B	993,140	\$16,974,579
NVDA	976,810	\$27,233,113
DLR	910,700	\$13,370,888
SPXU	743,620	\$16,961,867

Top 10 ETFs by TSX Value

Symbol	Market Volume	Market Value
XIU	3,419,643	\$126,840,905
ZEB	1,626,327	\$64,860,057
VFV	351,809	\$50,406,135
QQU	1,414,723	\$28,473,497
NVDA	976,810	\$27,233,113
ZSP	302,606	\$26,732,827
XIC	679,025	\$26,672,383
XEG	1,430,351	\$23,800,090
HND	4,511,421	\$23,293,950
XSP	395,476	\$22,982,520

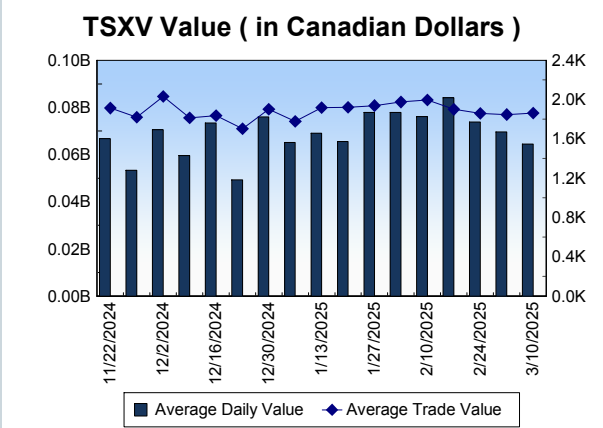
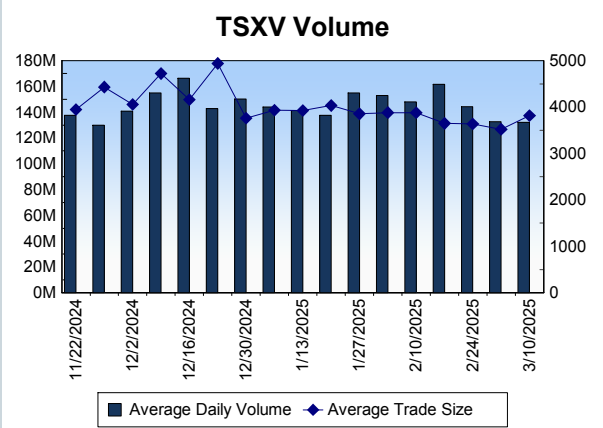
Block Trades	Non Block Trades
1,470	1,025,174

Top 5 Block Trade Brokers by Volume	
Broker	TSX Block Volume
BMO NESBITT BURNS INC.	33,822,000
GOLDMAN SACHS CANADA I	21,759,200
TD SECURITIES INC.	21,271,500
RBC CAPITAL MARKETS	19,342,900
NATIONAL BANK FINANCIAL	16,014,900

Top 5 Block Trade Symbols by Volume	
Symbol	TSX Block Volume
CNQ	10,602,500
SU	7,254,400
PPL	5,965,400
MFC	5,115,200
CVE	4,160,400

TSXV	
Daily Volume	153,308,509
Daily Value	\$71,675,015
Daily Trades	35,101
Daily Symbols Traded	1,051

TSXV ANONYMOUS TRADING	
Daily Volume	81,435,919
Daily Value	\$42,688,429
Average Trade Size	4,226
% TSXV Volume	53.12%



Top 20 TSXV Symbols by Volume		
Symbol	TSXV Volume	TSXV Value
AFM	5,307,589	\$2,779,423
QNC	4,663,601	\$3,096,806
TRBE	3,971,741	\$1,602,718
TVI	3,834,233	\$38,774
FMN	3,048,000	\$101,290
MUR	2,818,000	\$42,255
PNTR	1,795,342	\$567,480
RUG	1,733,500	\$52,005
VXTR	1,730,812	\$60,778
TAU	1,702,726	\$1,359,413
WRLG	1,618,762	\$947,393
RYE	1,549,500	\$159,320
OMG	1,502,500	\$597,283
MAH	1,444,120	\$7,221
GSHR	1,347,064	\$423,268
DBG	1,213,454	\$960,866
NOB	1,189,073	\$87,822
HSTR	1,145,812	\$1,205,670
SXL	1,141,400	\$28,635
SLG	1,093,917	\$404,507

Top 20 TSXV Symbols by Value		
Symbol	TSXV Volume	TSXV Value
TOI	58,977	\$7,987,744
QNC	4,663,601	\$3,096,806
LMN	71,948	\$2,798,557
AFM	5,307,589	\$2,779,423
ARTG	156,750	\$2,668,213
HIVE	802,729	\$2,008,896
SGD	211,445	\$1,731,552
TRBE	3,971,741	\$1,602,718
FWZ	786,126	\$1,364,695
TAU	1,702,726	\$1,359,413
SLI	640,800	\$1,313,958
PNG	543,686	\$1,282,049
PWM	936,499	\$1,273,995
HSTR	1,145,812	\$1,205,670
ITR	565,001	\$1,030,357
LUCA	808,262	\$998,725
DBG	1,213,454	\$960,866
WRLG	1,618,762	\$947,393
FDR	145,643	\$809,136
GOT	373,841	\$765,264

Dark TSX/TSXV Trading			
Volume	35,388,750	Daily Trades	147,392
Value	1,164,438,441	Daily Symbols Traded	1,432